

## B-Track K2Js / K2xJs

### Jack Stand Actuator DC Motor – Acme or Ball Screw



*Shown with optional switch box, direct drive manual override, and footpad.*



**Up to 2,800 lbs. (12455 N) Rated Load**  
**Up to 2.1 in. (53.34 mm)/sec. Travel Speed**

The B-Track Jack Stand actuator incorporates a large diameter extension rod providing the maximum offset load capability within the K2 family. The extension rod is slightly smaller than the cover tube and slides on Teflon® bearings within the cover tube. This feature makes the K2Js suitable for high-load, free-standing use.

A number of mounting options are available including trunnion mounts, or with standard flange plate (as shown). These units can be customized with an integral switch box, direct drive manual override, or pivoting footpad.

#### Features

- **Protective coatings** and O-ring seals throughout
- **Efficient in-line ball screw system**
- **Integral load holding brake** on K2x model
- **Ball detent overload clutch**
- **Stroke lengths** 8 to 16 inches (200 to 400 millimeters)
- **Load capacities** up to 2,800 pounds (12455 N)
- **Speeds up to** 2.1 inches (53.34 millimeters)/sec. travel
- **Thermal overload** incorporated into the motor
- **Heavy wall construction**
- **Double ball bearing motors**
- **Heat treated gears**
- **Rugged extension rod** bearing support
- **Custom mounting** options available

#### Typical Applications

- Trailer jack stands
- Trailer and vehicle outriggers
- Implement lifts
- Machine height adjustment
- Camper lifts
- Load Levelers

#### Load/Current/Speed/Duty Cycle

- Maximum Static Rating: 3,000 lbs. (13345 N) Static (in-line load)
  - Refer to performance chart for load/current/speed capabilities
  - Stroke Length Tolerance: +/- .06" (1.52 mm)
  - Motor is protected with auto reset breaker inside motor housing (temperature/current/time dependent)
  - Overload clutch setting: +25% over rated dynamic load
  - Duty cycle is time/temperature/load dependent, suggested guidelines are:
    - 50% max on-time/50% off-time for loads up to 50% of capability
    - 25% max on-time/75% off-time for loads between 50%-80% of capability
    - 10% max on-time/90% off-time for loads between 80%-100% of capability
- (Load/stroke profiles will allow some adjustment variation from these guidelines.)

#### Operating Environment

- Ambient temp range:
  - 20° F to +150° F (-29° C to +65° C),
  - 40° F to +176° F (-40° C to +80° C) Upon Request.
- Weather resistant enclosure & seals (IP 54 capable, 250 hour salt spray, 500 hour for paint)
- Normal operating voltage: 10-16 vdc (Ratings are at 12 vdc Normal.)

#### Control/Connections

- 14 gauge stranded lead wires-UL style 1230 w/PVC insulation Class F 105° C
- Lead wires abrasion protected with spiral covering
- Use momentary contact double pole/double throw switch in powering unit for extend/retract operation. (ON)-OFF-(ON) DPDT
- Connectors:
  - Packard 56 series or Delphi Weather-Pack
  - Packard 56 series with 56 series blades (#2984883 & #2962987)
  - Delphi Weather-Pack series (#121015792 & #12010973)

# B-Track K2Js / K2xJs

## Performance Graphs

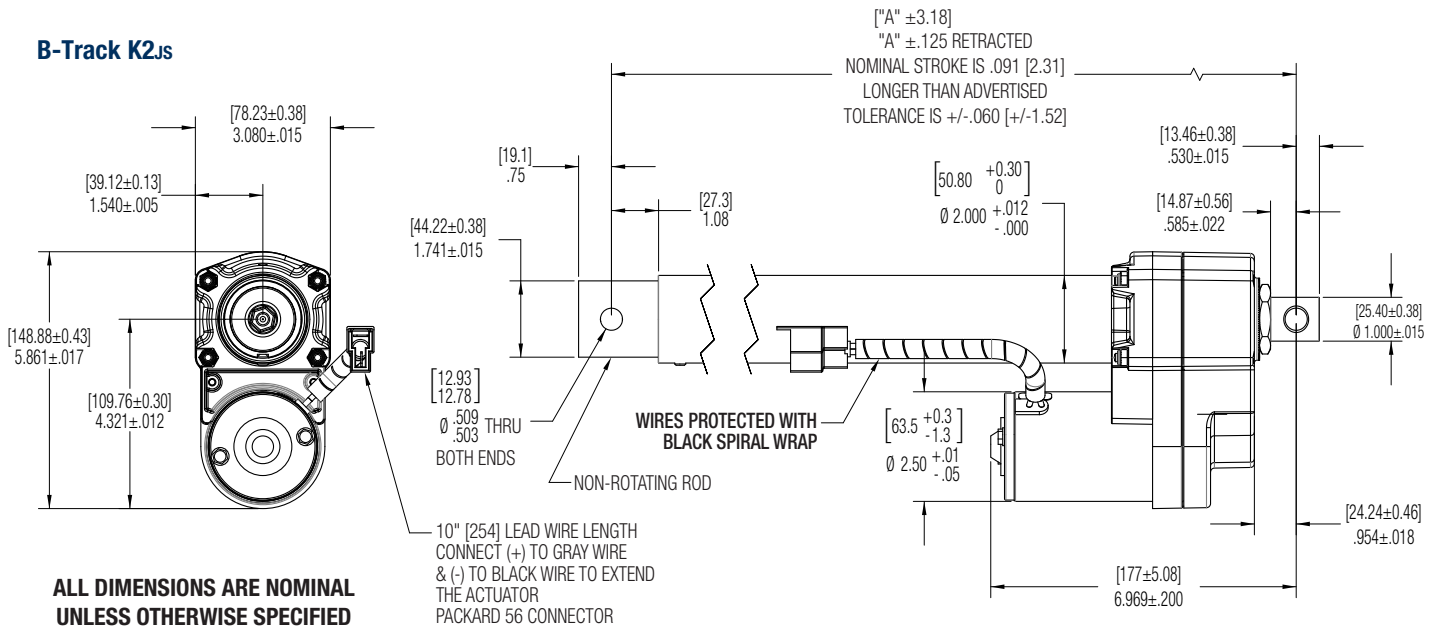
See page 29-30 for K2Js performance charts.  
See page 37-38 for K2xJs performance charts.

## Dimensions

B-TRACK K2Js/ K2xJs	Stroke	in.	mm	in.	mm	in.	mm	in.	mm	in.	mm
		8	203	10	254	12	305	14	356	16	406
	A	20.98	532.9	22.98	583.7	24.98	634.5	26.98	685.3	28.98	736.1

Note: Special lengths available

### B-Track K2Js



### B-Track K2xJs

